

# PRODUCT INFO

## BACK-ROLLER CITY

Rear pannier with roll closure and QL1 system

QL1 system

IP 64

PD620

PS490



Carrying handle for mounting and releasing the QL1 system

D-ring for shoulder strap (optional)

Buckles for closing the rolling closure

Lateral 3M Scotchlite reflector on both sides

QL1 bar and hooks for quick fastening and release



Semi-elliptical hook rail with QLhook (adjustable in 15° steps)

Edge protector with slots for mounting the Carrying System Bike Pannier

Height cm/in	Width cm/ in	Depth cm/ in	Volume L.	Weight gr.	Max. capacity kg.
42/16.5	23/32 9/12.6	17/6.7	20	760	9

### SPECIFICATIONS:

- + Waterproof bike pannier bag ideal as starter model
- + QL1 mounting system with straight lower hook rail
- + Sides of PS490, front and back of PD620 material
- + No mounting required (simply adjust the hook distance with allen key no. 3)
- + Ideal for racks with a cross-section up to 16mm
- + Reduction pieces for rack cross-sections 8 and 11mm included
- + Can be used individually, or in pairs
- + Highly reflective Scotchlite reflector
- + Can be easily cleaned inside
- + Easy to clean inside

**Contents:** Pannier comes as a SINGLE bag with inserts, carry strap not included.

**Optional accessories:** Packing Cubes/Commuter Insert for Panniers, Carrying System Bike Pannier, shoulder strap (No. E172)

**Attention:** Maximum load per pannier is 9kg / 20 lbs. We recommend weighing each loaded pannier to confirm that the maximum allowance of the pannier fixation is not exceeded. This practice is advised for both rear and front panniers. CAUTION: The maximum weight capacity of every carrier model is different. Please observe the maximum weight allowance of the carrier fitted to your bicycle. Note: Sometimes the maximum capacity of the panniers fixing system can exceed the maximum capacity of the carrier. DONOT exceed the maximum capacity of the carrier! Note, that the use of panniers will significantly influence the handling properties of your bicycle.

**Attention:** As abrasion cannot be ruled out, we recommend that all points where the mounting system contacts the bicycle rack or frame be protected by scratch protection film.

**Note:** In order to meet standard IP64 (6=dustproof 4=protected against splash water coming from all directions) the lid must be rolled 3-4 times.

# QL1-SYSTEM

DE MONTAGEANLEITUNG:  
GB ASSEMBLY INSTRUCTIONS:  
FR INSTRUCTIONS DE MONTAGE:

IT ISTRUZIONI DI MONTAGGIO:  
NL MONTAGE HANDLEIDING:  
DK MONTERINGSVEJLEDNING:

ES INSTRUCCIONES DE MONTAJE:  
SE MONTERINGS ANVISNING:  
NO MONTERINGS ANVISNING:

FI ASENNUSOHJEET:  
PL INSTRUKCJA MONTAŻU:  
JP 換気の良い所に保管してください。

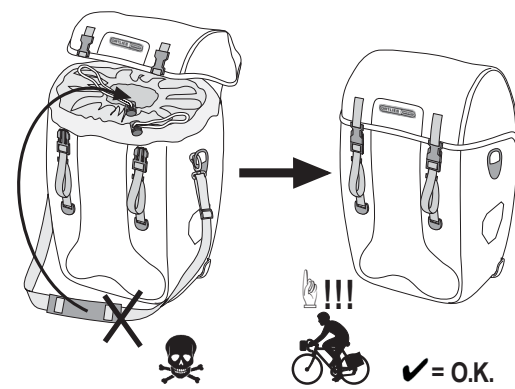


## QL1 - MODELS

Bike-Packer Sport-Packer incl.

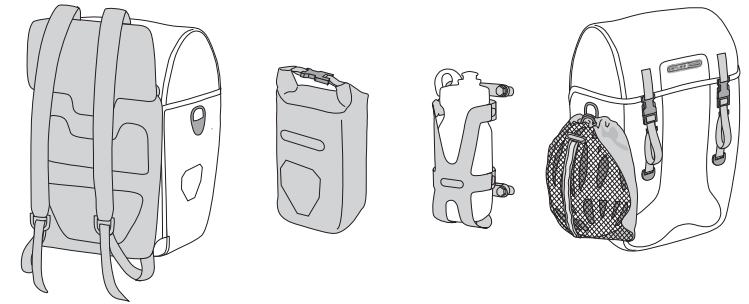


## ⚠



## ACCESSOIRES

= + Art. #F34 = + Art. #F91S = + Art. #F9101 = + Art. #F9121

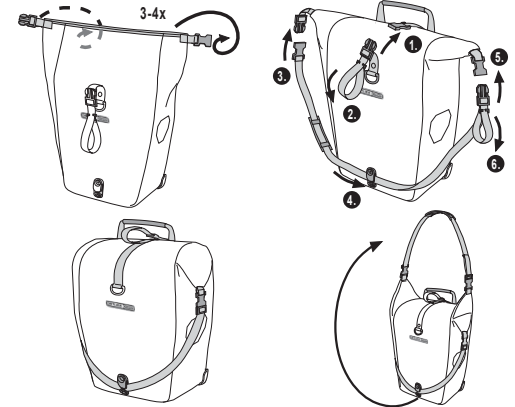


## QL1 - MODELS

Back-Roller Sport-Roller incl.

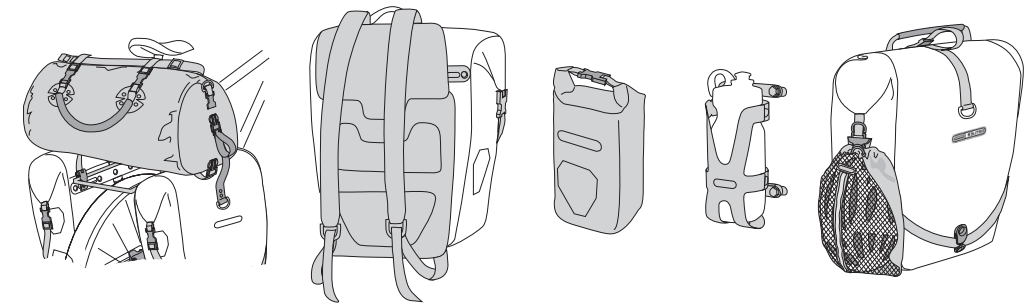


## ⚠



## ACCESSOIRES

= + Rack-Pack, Size S + M = + Art. #F34 = + Art. #F91S = + Art. #F9101 = + Art. #F9121

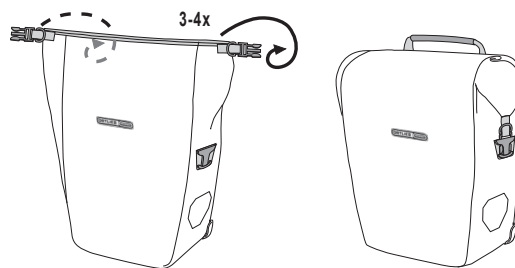


## QL1 - MODELS

Back-Roller City Sport-Roller City



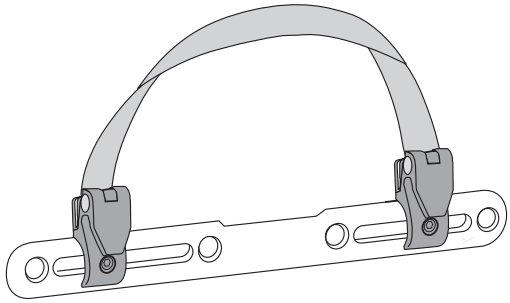
## ⚠



## ACCESSOIRES

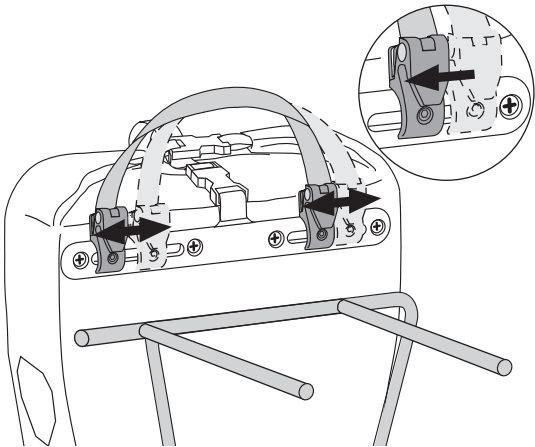
= + E172 = + Art. #F34



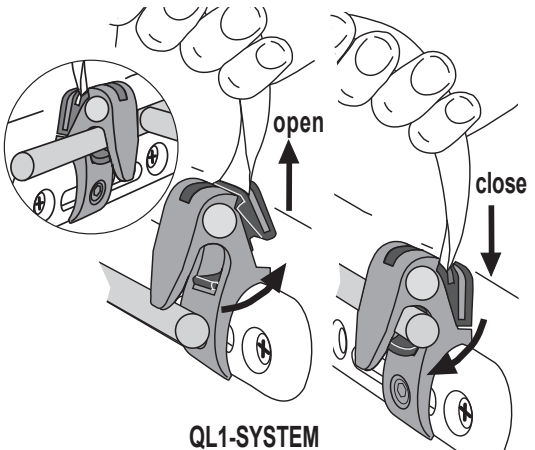


8 = **A** 8 mm      11 = **B** 11 mm

**B**

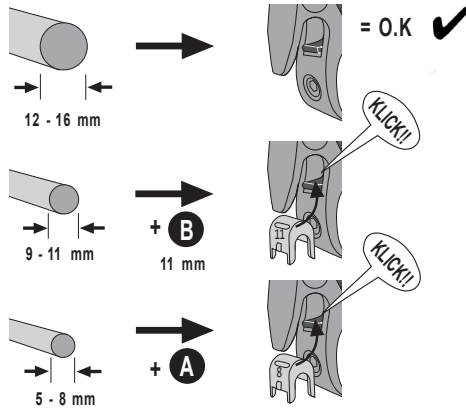


**D**

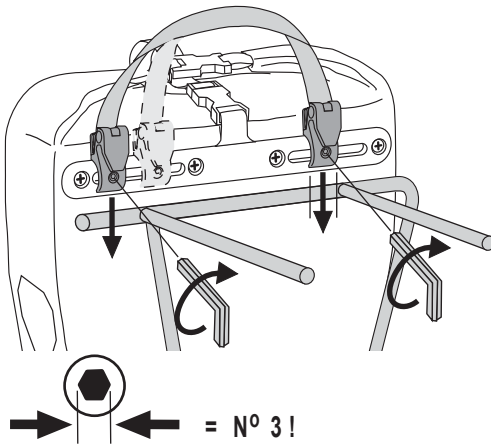


QL1-SYSTEM

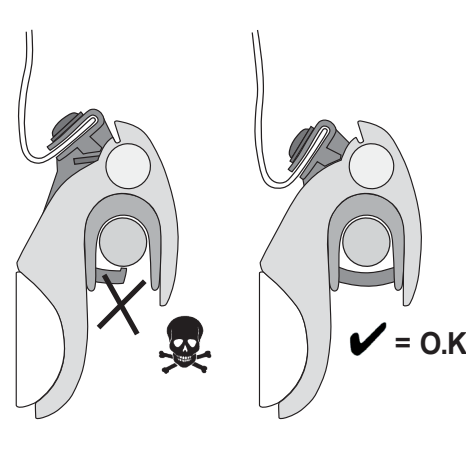
**A**



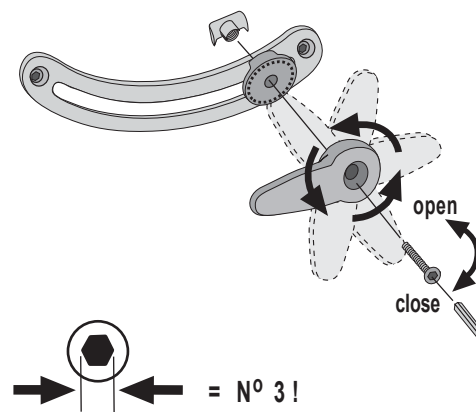
**C**



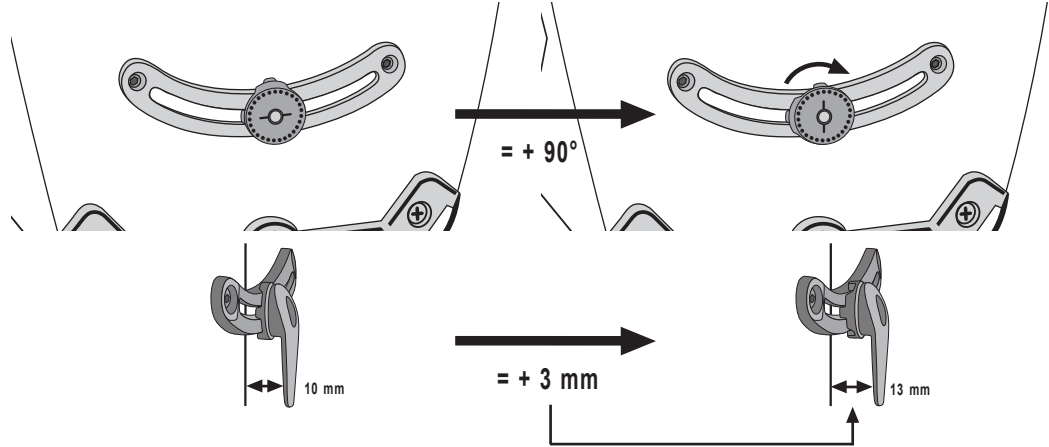
**E**



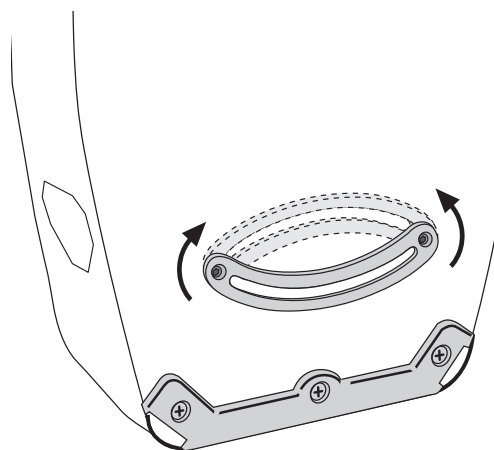
**F**



Option 1



Option 2



**G**

