

# PRODUCT INFO

## E-MATE

Bike pannier with QL2.1 system for E-Bikes (single bag)



- Mounting for shoulder strap
- Reflective logo
- Magnetic closure
- Lateral, light grey reflectors
- Outer mesh pocket
- Adjustable, removable shoulder strap

Inside the bag:



Zippered inner pocket for display

- Release handle for mounting and releasing the QL2.1 system
- Automatically locking QL2.1 hooks (16 mm)
- Exchangeable hook inserts with anti-scratch surface, 8, 10 and 12 mm



- Slidable and rotatable hook (15° steps)
- Semi-elliptical hook rail made of two-component synthetic with anti-scratch function, prevents abrasions on carrier
- Edgeprotector



Padded removable sleeve for E-Bike battery

dimensions	height cm/in.	width cm/in.	depth cm/in.	vol L/cu.in.	weight g/oz.	max. capacity kg/lbs.
bag	39/15.4	29/11.4	21/8.3	16/976	1142/40.3	9/19.8
battery compartment	30/11.8	12,5/4.9	11/4.3			
zippered inner pocket	10/3.9	20/7.9				

## SPECIFICATIONS:

- + Waterproof bike pannier (single bag) with QL2.1 system for E-Bikes
- + Ideal for everyday use, day trips, city touring by E-Bike
- + PU-laminated nylon fabric, PVC-free
- + Lid with magnetic closure
- + Stable shape thanks internal stiffener
- + Padded removable sleeve for battery (compatible with batteries by Bosch, Shimano, Yamaha, Bionix and others)
- + Zippered inner pocket for safe storage of display
- + Bright inner lining for easy packing
- + Outer mesh pocket
- + Adjustable, removable shoulder strap
- + Lateral light grey reflectors
- + QL2.1 mounting system for carriers with a tube diameter up to 16 mm
- + Reduction inserts with anti-scratch surface for tube diameters 8, 10 and 12mm included, for protection of carrier surface
- + 18 mm and 20 mm hook available as accessory
- + Top QL-hook and lower sliding hook adjustable without requiring any tools
- + Lower hook rail made of two-component „hard-soft“ synthetic prevents abrasions on carrier
- + Symmetrical shape allows use on left or right side of carrier

**Contents:** E-Bike bag with QL2.1 system including padded battery sleeve, each one pair reduction inserts 8, 10 and 12 mm

**Accessories:** Carrying System Bike Pannier, Outer Pocket 2.1 L, Anti-Theft-Device (No. E125), Mesh Pocket, Bottle Cage, QL2.1 Hook 18 mm (E211) & 20mm (E193)

**Attention:** Remove the shoulder strap or put it inside the bag before cycling

**Attention:** Maximum load per pannier is 9kg / 20 lbs. We recommend weighing each loaded pannier to confirm that the maximum allowance of the pannier fixation is not exceeded. This practice is advised for both rear and front panniers. CAUTION: The maximum weight capacity of every carrier model is different. Please observe the maximum weight allowance of the carrier fitted to your bicycle. Note: Sometimes the maximum capacity of the panniers fixing system can exceed the maximum capacity of the carrier. DON'T exceed the maximum capacity of the carrier! Note, that the use of panniers will significantly influence the handling properties of your bicycle.

**Attention:** As abrasion cannot be ruled out, we recommend that all points where the mounting system contacts the bicycle rack or frame be protected by scratch protection film.

**Note:** In order to meet standard IP53 (5=protected against dust, 3=protected against spray water max. 60° to the vertical) the closure must be completely closed.

ORTLIEB Sportartikel GmbH · Rainstrasse 6 · 91560 · Heilsbronn, Germany · T +49 9872 800-0 · F +49 9872 800-266 · E info@ortlieb.com · www.ortlieb.com

# E-MATE QL2.1

DE MONTAGEANLEITUNG:  
GB ASSEMBLY INSTRUCTIONS:  
FR INSTRUCTIONS DE MONTAGE:

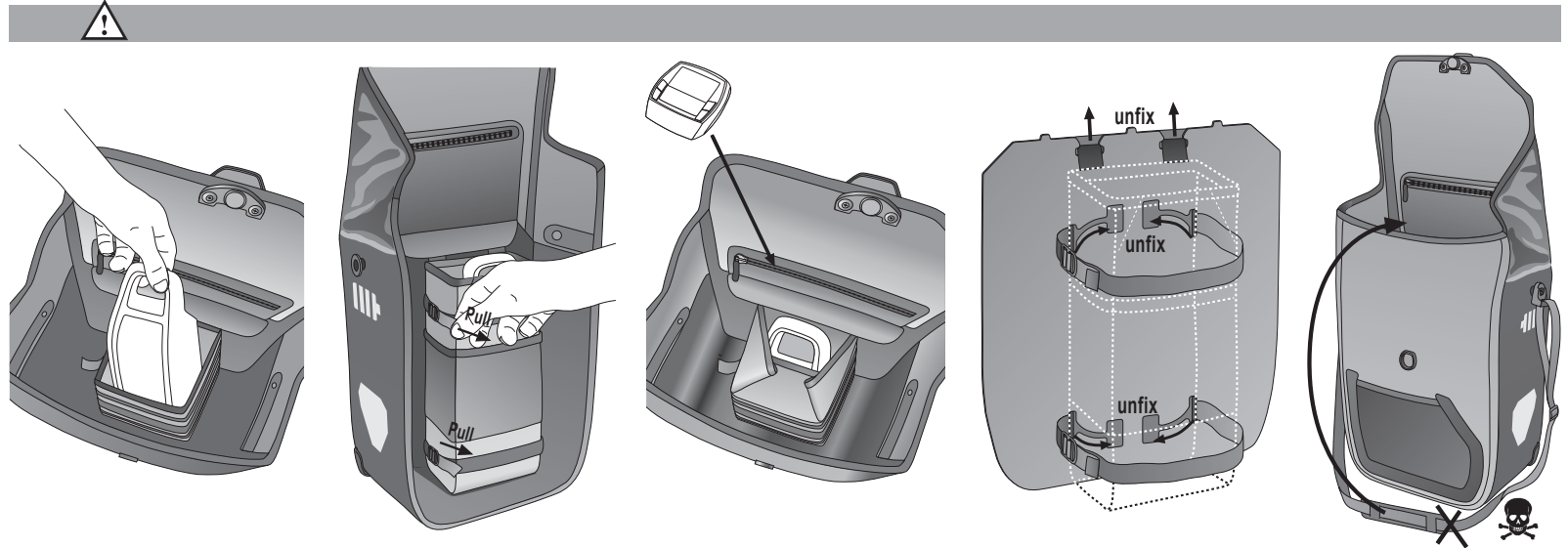
IT ISTRUZIONI DI MONTAGGIO:  
NL MONTAGE HANDLEIDING:  
DK MONTERINGSVEJLEDNING:

ES INSTRUCCIONES DE MONTAJE:  
SE MONTERINGS ANVISNING:  
NO MONTERINGS ANVISNING:

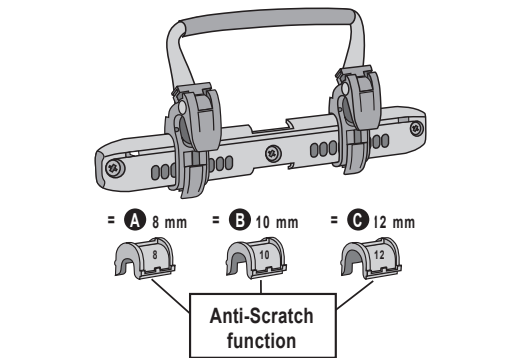
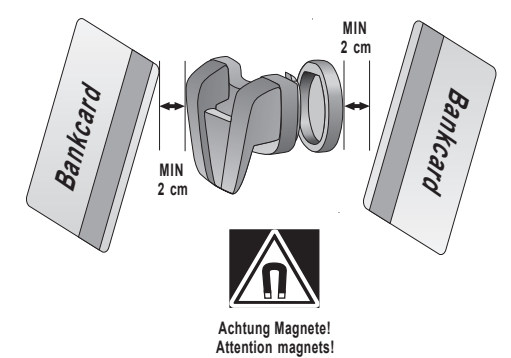
FI ASENNUSOHJEET:  
PL INSTRUKCJA MONTAZU:  
JP 換気の良い所に保管してください。



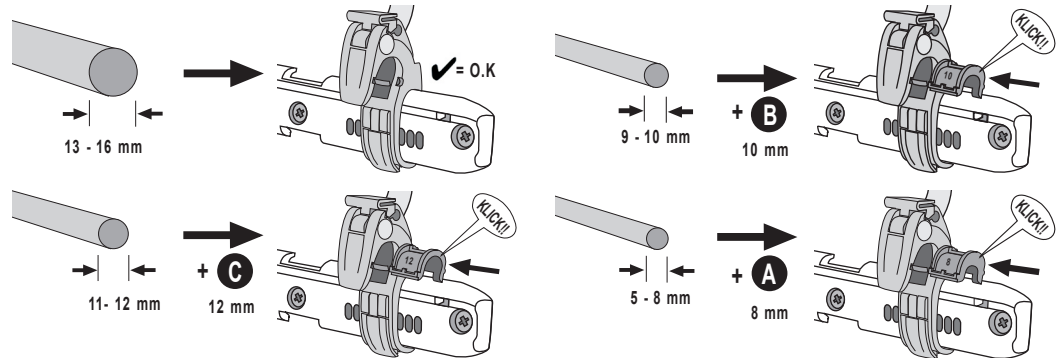
## QL2.1 - MODELS



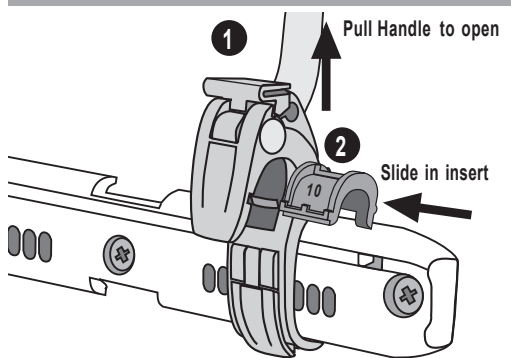
## QL2.1



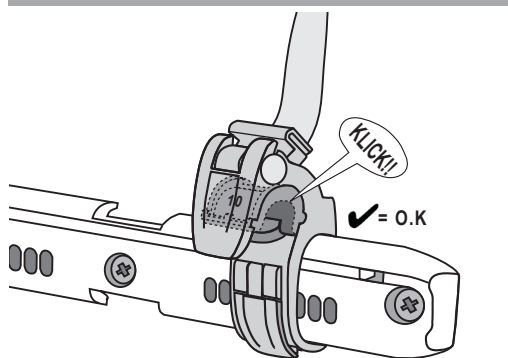
## A



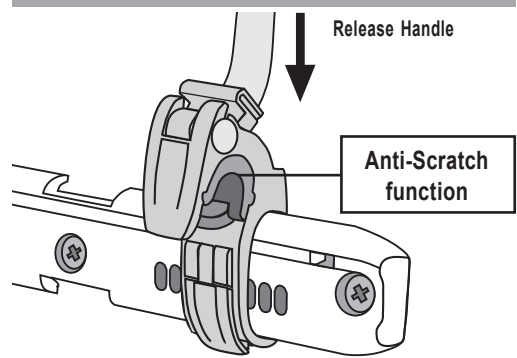
## B



## C



## D



## E

