

# PRODUCT INFO



## GRAVEL-PACK

Waterproof pannier (single)



- Handle for mounting and releasing the QL2.1 system
- Additional closure with buckle and D-ring (when bag is carried with shoulder strap)
- D-ring for fixing shoulder strap (strap optional, sold separately)
- Buckles for closing roll closure at the top or for attaching shoulder strap

- PVC free
- IP 64
- Anti scratch
- QL2.1 system
- PS21R
- PS33



„Tested top product“, Tipp RADtouren5/17



- Automatically locking QL2.1 hooks with 16 mm diameter  
Exchangeable hook inserts in sizes 8, 10 and 12 mm
- 2 slidable and rotatable hooks (15° steps) with anti-scratch function
- Hook rail made of two-component synthetic with anti-scratch function
- Edgeprotector with slots for mounting the ORTLIEB carrying system

Height cm/in	Width cm/ in	Depth cm/ in	Volume Ltr.	Weight gr.	max. capacity kg.
30/11.8	25/9.8	14/5.5	12.5	580	9

## SPECIFICATIONS:

- + Waterproof pannier pair with roll closure
- + Ideal pack for bikepacking, alp crossing and trekking tours
- + Light weight, sturdy PULaminated rip stop nylon fabric
- + QL2.1 system for racks up to 16 mm, plus additional mounting hook for secure fixing to rack
- + Including reduction pieces for tube diameters 8, 10 and 12 mm; with anti-scratch function reducing abrasions on rack
- + Top QL hooks and lower sliding hook adjustable without requiring any tools
- + Lower hook rail made of two-component „hard-soft“ synthetic reduces abrasions on carrier
- + Symmetrical shape allows use on right or left side
- + Highly reflective 3M Scotchlite reflectors

**Contents:** Single Pannier, reduction inserts for 8, 10 and 12 mm (two per size)

**Optional accessories:** Carrying System Bike Pannier, Anti-Theft-Device (E124), Shoulder Strap (E172), QL2.1 hook 18 mm (E211), QL2.1 hook 20 mm (E193)

**Attention:** Maximum load per pannier is 9kg / 20 lbs. We recommend weighing each loaded pannier to confirm that the maximum allowance of the pannier fixation is not exceeded. This practice is advised for both rear and front panniers. CAUTION: The maximum weight capacity of every carrier model is different. Please observe the maximum weight allowance of the carrier fitted to your bicycle. Note: Sometimes the maximum capacity of the panniers fixing system can exceed the maximum capacity of the carrier. DONOT exceed the maximum capacity of the carrier! Note, that the use of panniers will significantly influence the handling properties of your bicycle.

Cannot be used with a rack pack (25 mm connector).

**Note:** In order to meet standard IP64 (6=dustproof 4=protected against splash water coming from all directions) the lid must be rolled 3-4 times.

# GRAVEL-PACK

DE MONTAGEANLEITUNG:  
GB ASSEMBLY INSTRUCTIONS:  
FR INSTRUCTIONS DE MONTAGE:

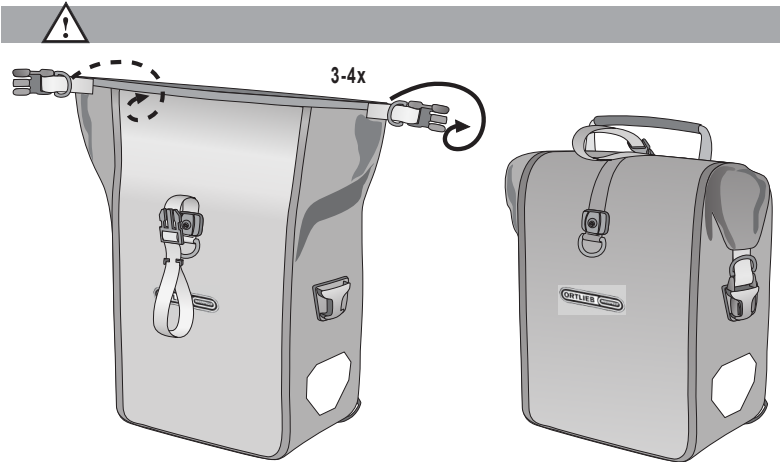
IT ISTRUZIONI DI MONTAGGIO:  
NL MONTAGE HANDLEIDING:  
DK MONTERINGSVEJLEDNING:

ES INSTRUCCIONES DE MONTAJE:  
SE MONTERINGS ANVISNING:  
NO MONTERINGS ANVISNING:

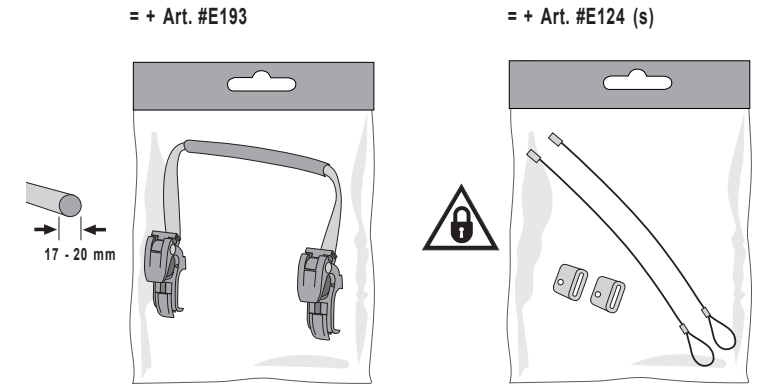
FI ASENNUSOHJEET:  
PL INSTRUKCJA MONTAZU:  
JP 換気の良い所に保管してください。



## GRAVEL-PACK

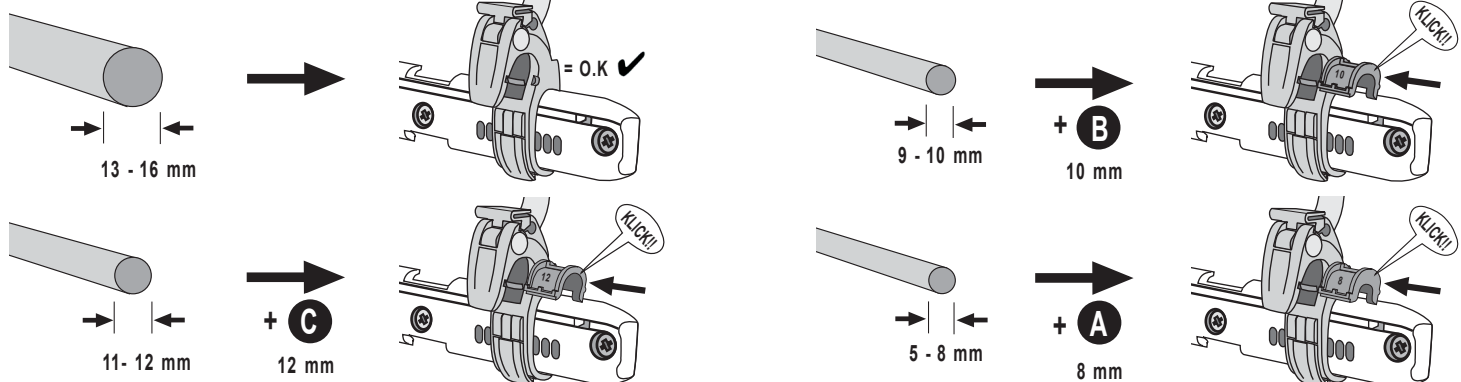
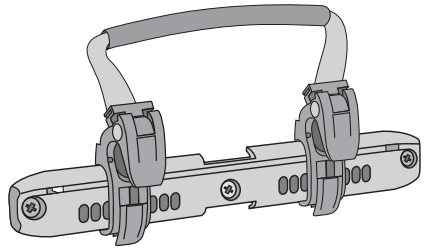


## ACCESSOIRES

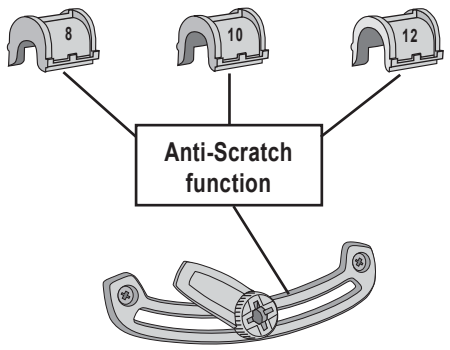


## QL2.1

## A



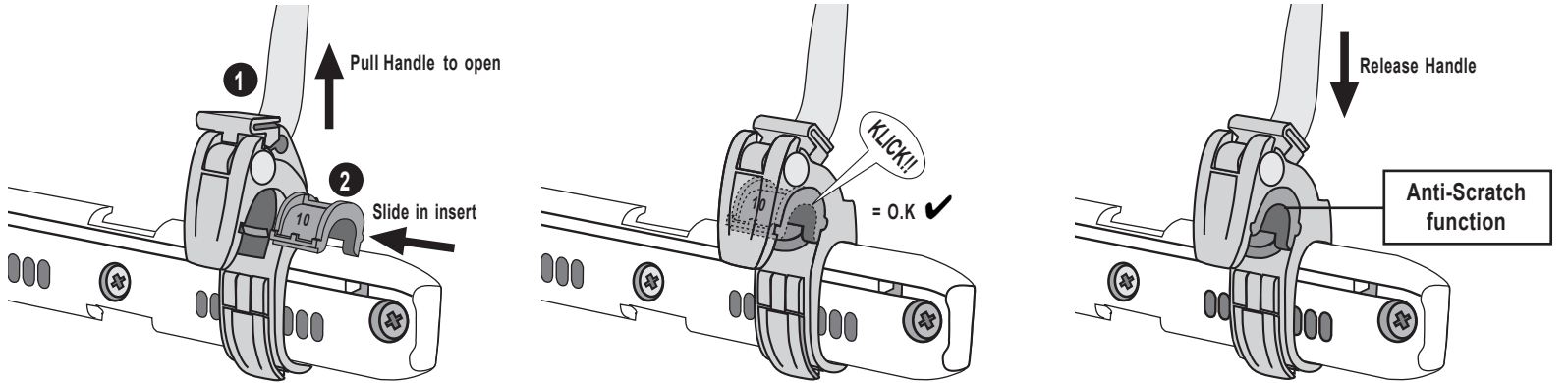
= **A** 8 mm = **B** 10 mm = **C** 12 mm



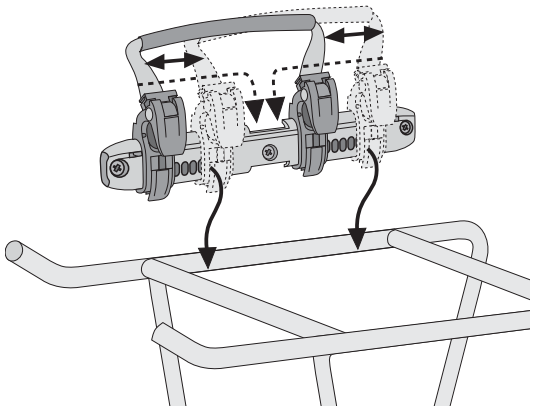
## B

## C

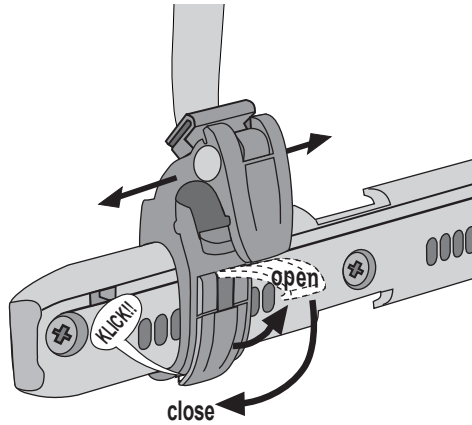
## D



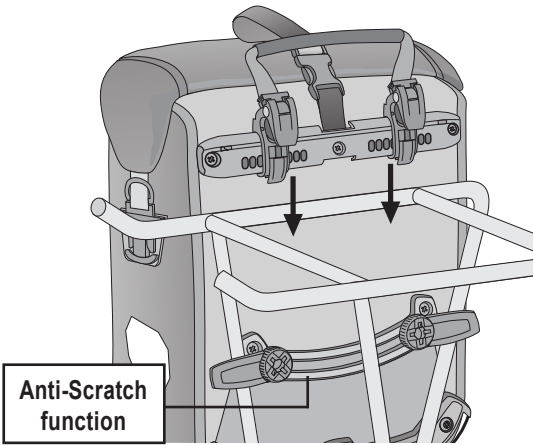
E



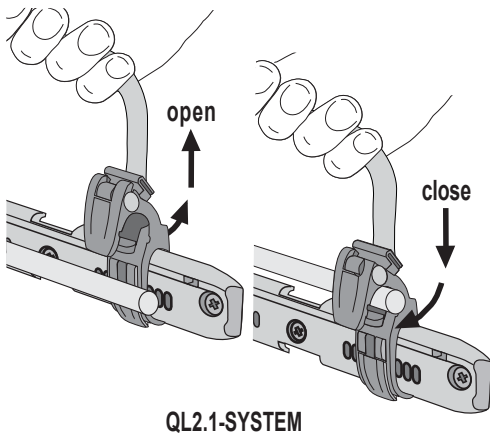
F



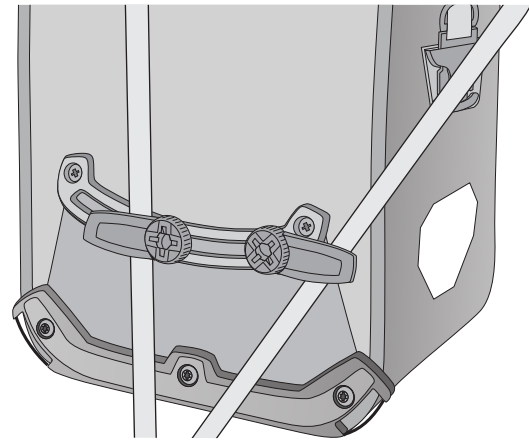
G



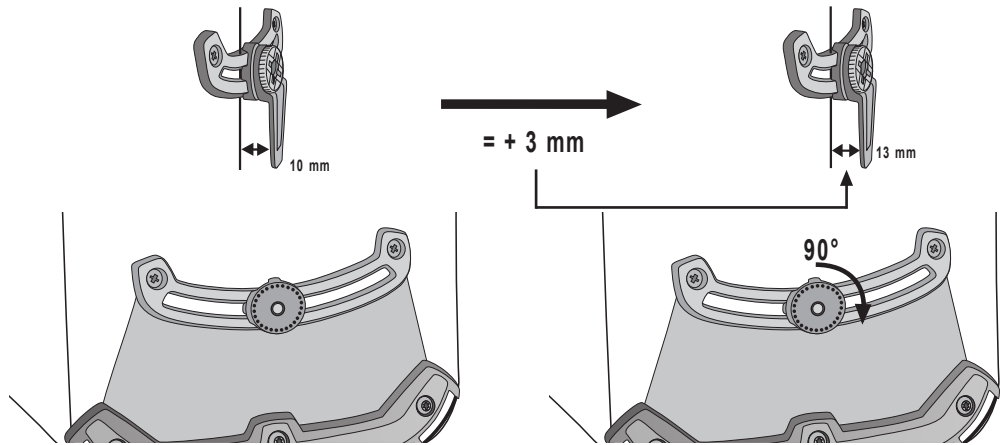
H



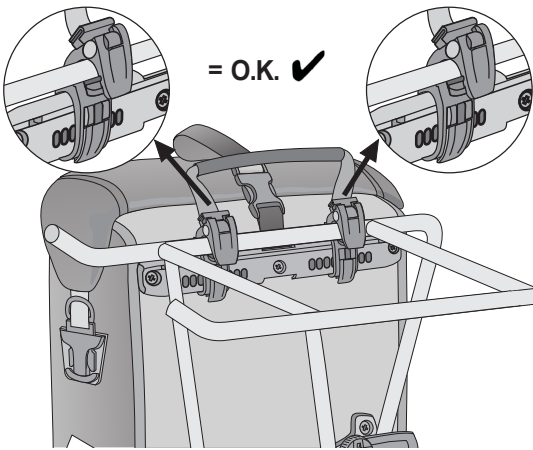
K



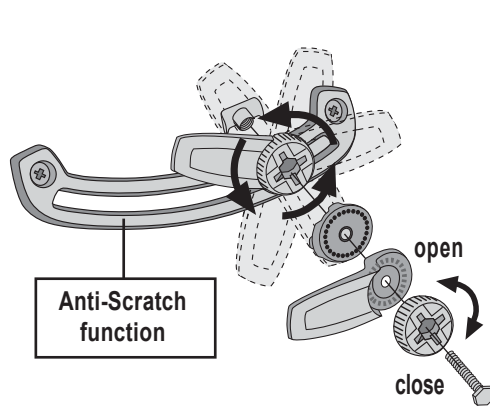
Option 1



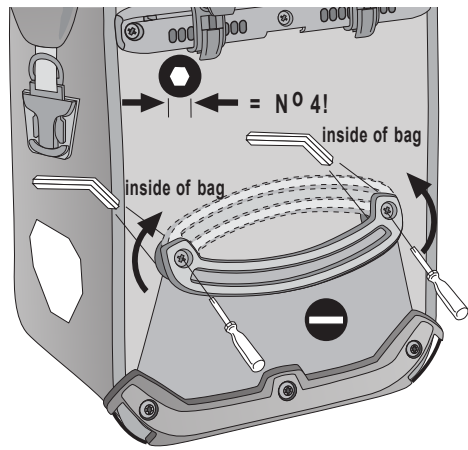
I



J



Option 2



Warning

