

PRODUCT INFO

BACK-ROLLER FREE

Rearpannier (single bag) with roll closure and QL3.1 system

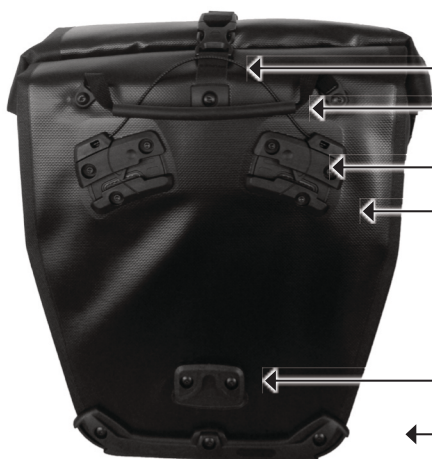


Additional closure with buckle and D-ring (when bag is carried with shoulder strap)

Buckles for closing roll closure at top or for attaching shoulder strap

Lateral 3M Scotchlite reflector on both sides

Shoulder strap with padding for comfortable carrying or for fixing to the hook



QL3.1 release handle

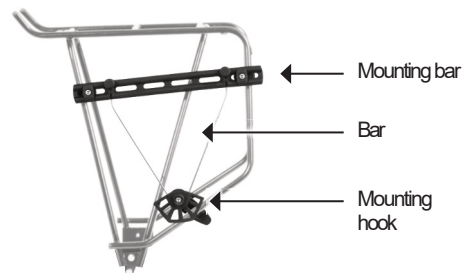
Handle

Upper QL3.1 mounting

Clean uncluttered back, no protruding hooks

Lower QL3.1 mounting

Edge protector



QL3/QL3.1 mounting components (incl.)

Height cm/in	Width cm/ in	Depth cm/ in	Volume L/cu.in.	Weight g/oz.
42/16.5	23/32 9/12.6	17/6.7	20/ 1220	1040/ 36.7

SPECIFICATIONS:

- + Classic Back-Roller rear bag with Quick-Lock 3.1 system
- + Single pocket with roll closure
- + Made of PVC-free, PU-coated polyester fabric
- + Ideal for the way to work, university or school
- + Mounting components are fixed to rack
- + Standard mounting for rack tube diameters up to 10 mm
- + Mounting and removing the bag with only one hand
- + Flat locking elements ensure a smooth back of the bag
- + Height and inclination of the bag individually adjustable
- + Lower mounting hook of the mounting set can be rotated
- + With integrated inner pocket and shoulder strap
- + Highly luminous reflectors made of 3M Scotchlite Reflex Material
- + Easy to clean inside

Contents: QL3.1 single bag with shoulder strap, QL3.1 mounting brackets

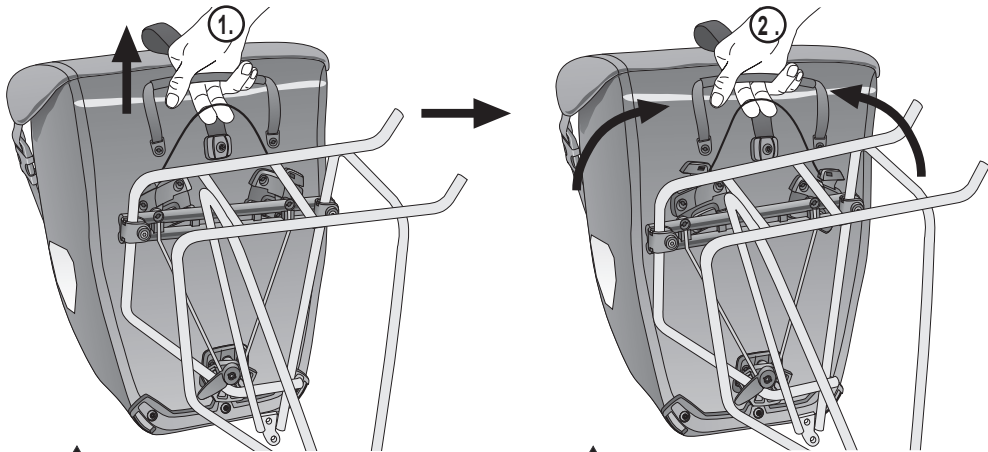
Optional accessories: QL3.1 mounting clamps for luggage carrier diameter 11 to 14 mm, QL3.1 mounting set for a second bike, Outer Pocket 2, L, Mesh-Pocket, Bottle-Cage

Attention: Maximum load per pannier is 9kg / 20 lbs. We recommend weighing each loaded pannier to confirm that the maximum allowance of the pannier fixation is not exceeded. This practice is advised for both rear and front panniers. CAUTION: The maximum weight capacity of every carrier model is different. Please observe the maximum weight allowance of the carrier fitted to your bicycle. Note: Sometimes the maximum capacity of the panniers fixing system can exceed the maximum capacity of the carrier. DONOT exceed the maximum capacity of the carrier! Note, that the use of panniers will significantly influence the handling properties of your bicycle.

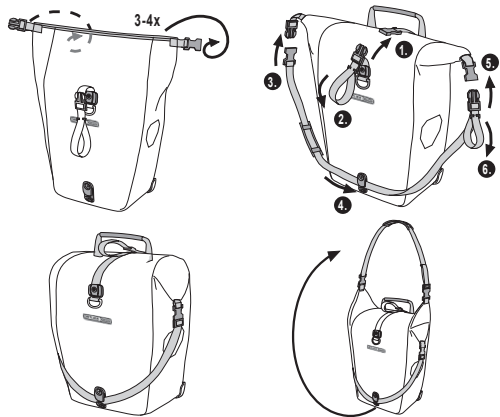
Note: In order to meet standard IP64 (6=dustproof 4=protected against splash water coming from all directions) the closure must be rolled 3-4 times.



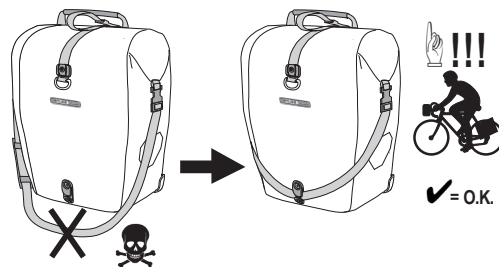
J



K



L

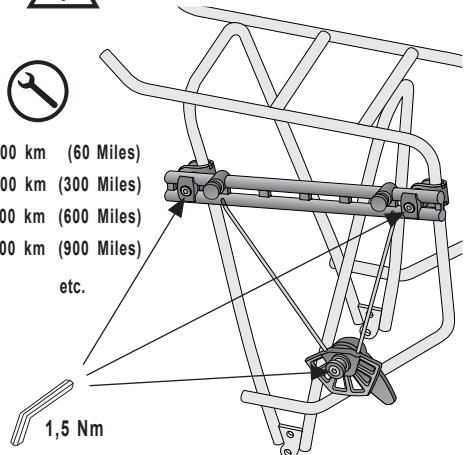


M



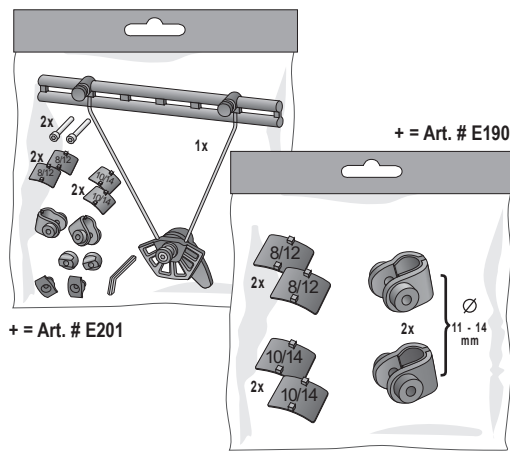
- 1.) 100 km (60 Miles)
- 2.) 500 km (300 Miles)
- 3.) 1000 km (600 Miles)
- 4.) 1500 km (900 Miles)

etc.



1,5 Nm

ACCESSOIRES



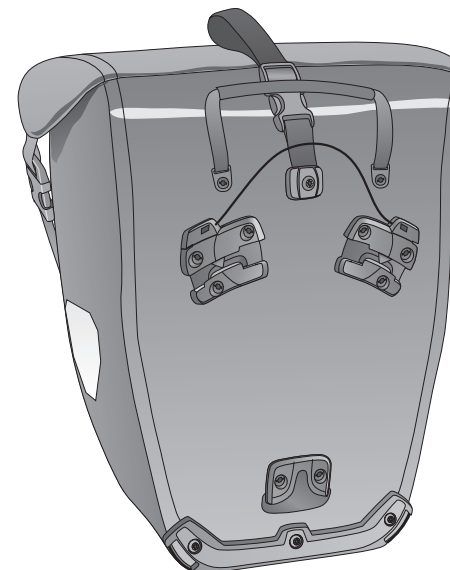
BACK-ROLLERQL3.1

- DE MONTAGEANWEISUNG:
- GB ASSEMBLY INSTRUCTIONS:
- FR INSTRUCTIONS DE MONTAGE:
- IT ISTRUZIONI DI MONTAGGIO:
- NL MONTAGE HANDLEIDING:
- DK MONTERINGSVEJLEDNING:
- ES INSTRUCCIONES DE MONTAJE:
- SE MONTERINGSANVISNING:
- NO MONTERINGSANVISNING:
- FI ASENNUSOHJEET:
- PL INSTRUKCJA MONTAŻU:
- JP 換気の良い所に保管してください。

ORTLIEB WATERPROOF



- INHALT:
- CONTENTS:
- CONTENU:
- INHOUD:
- INDHOLD:
- CONTENDO:
- INNEHÅLL:
- INHOLD:
- SSÄLLYS:
- ZAWARTOSC:
- 火気厳禁



- 2x (A) 2x (E)
- 2x (B) 2x (F)
- 2x (C) 2x (G)
- 1x

