

# PRODUCT INFO

## HANDLEBAR-PACK QR

Waterproof handlebar bag with Bar-Lock adapter system



- PVC free
- IP 64
- PS21R
- PS33
- PFAS free



inner Compression Straps



Side view



Optional accessory:  
Handlebar-Pack QR Inner Pocket (F9924)

height cm/in	width cm/in.	depth cm/in.	vol. L/cu.in.	weight g/oz.	max. load kg/lbs.
22/8.7	26/32   10.2/12.6	18/7.1 (24/9.4 incl. adapter)	11/671	530/18.7	5/11.0

### SPECIFICATIONS:

- + Simple, quick installation and removal, thanks to the clever Bar-Lock System
- + Ideal for bike packing
- + Size and shape of the bag is ideal for use with drop handlebars
- + Easy top-loading access with roll closure
- + Lightweight, robust PU-coated nylon fabric
- + 2 mesh outer pockets for food or quick access items
- + 2 compression straps with CamLock hooks
- + 2 additional inner compression straps
- + Reflective ORTLIEB logo and diamond-shaped 3M Scotchlite reflector
- + Optional zipped inner pocket (sold separately)
- + Protective Caps for mounting on carbon handlebars

**Contents:** Handlebar-Pack QR with Bar-Lock mounting system and Protective Cap Handlebar-Pack QR

**Optional accessory:** Handlebar-Pack QR Inner Pocket (Art.No. F9924)

#### Attention:

+ If the product is completely submerged, water can penetrate through the closure

**Note:** In order to meet standard IP64 (6=dustproof, 4=protected against splash water coming from all directions) the closure must be rolled 3-4 times.



# PRODUCT INFO

## HANDLEBAR-PACK QR

Waterproof handlebar bag with Bar-Lock adapter system

### SHORT ASSEMBLY INSTRUCTIONS:



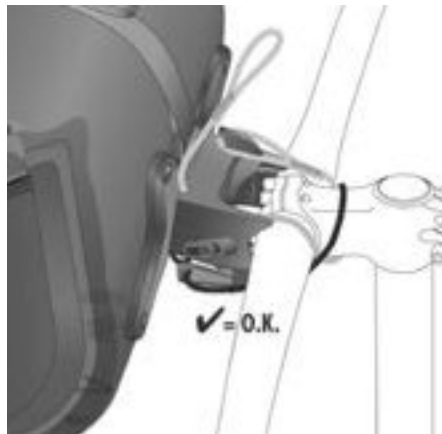
1.



2.



3.



4.

**Attention:** For more detailed information on mounting, please see the instructions!

### MEASUREMENTS IN DETAIL:



Dimensions in cm/in.; shown handlebar width 40cm/15.7in.

# HANDLEBAR-PACK QR



- DE MONTAGEANLEITUNG
- GB ASSEMBLY INSTRUCTIONS
- FR INSTRUCTIONS DE MONTAGE
- IT ISTRUZIONI DI MONTAGGIO
- NL MONTAGE HANDLEIDING
- DK MONTERINGSVEJLEDNING
- ES INSTRUCCIONES DE MONTAJE
- SE MONTERINGSANVISNING
- NO MONTERINGSANVISNING
- FI ASENNUSOHJEET
- PL INSTRUKCJA MONTAŻU
- JP 装着方法



VIDEO



**!**

✓ = O.K.

25,4 - 35 mm

2x (A)

HINWEIS: Oberflächliche Spure in Lack können dabei dennoch entstehen. Überprüfe vor jeder Verwendung des Mounting Set QR den korrekten Sitz der "Schutzkappen".  
NOTE: Some superficial abrasion may occur. Confirm fitment of "Protective Caps" with each installation of the Mounting Set QR.

**!**

CLEAN FIRST

> 25°

✓ = O.K.

= NO

HINWEIS: Bei starker Nutzung des Produkts kann es möglicherweise zu leichtem Abrieb der Farbe an der Oberfläche von Lenker und Vorbau kommen. Um diese Abnutzung zu minimieren, entfernen Sie bitte Schmutz oder Sand an den Kontaktstellen, bevor Sie die Tasche am Fahrrad befestigen.  
NOTE: Use of this product may cosmetically blemish the surface of the handlebar and stem. To minimize wear please remove any dirt or grit off of the contact points prior to fixing to bike.

**1.1** INITIAL ADJUSTMENT

**1.2** ADJUST GREY / BLACK CORD

**2.1** FIX GREY / BLACK CORD

**2.2** FIX GREY CORD

**2.3** FIX GREY CORD

**2.4** FIX GREY CORD

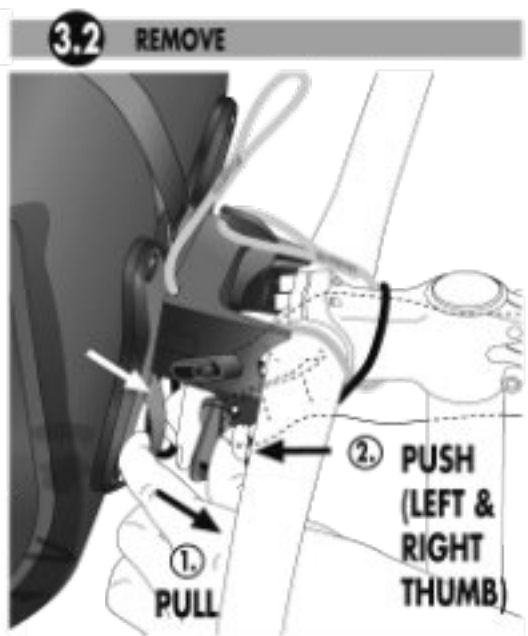
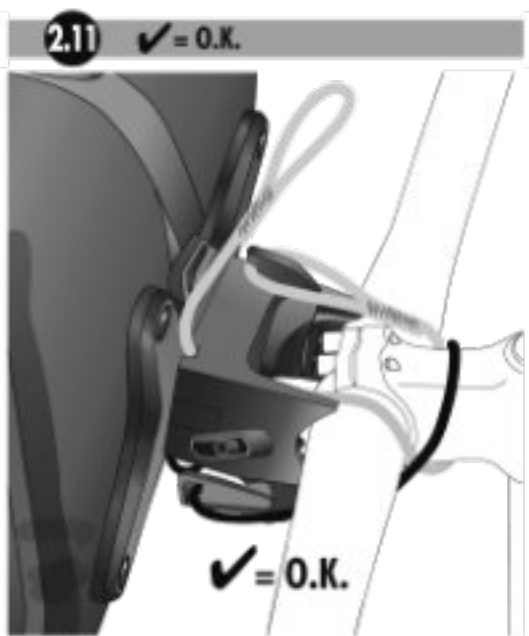
**2.5** FIX BLACK CORD

**2.6** FIX BLACK CORD

**2.7** FIX BLACK CORD

**2.8** FIX BLACK CORD

**2.9** FIX BLACK CORD

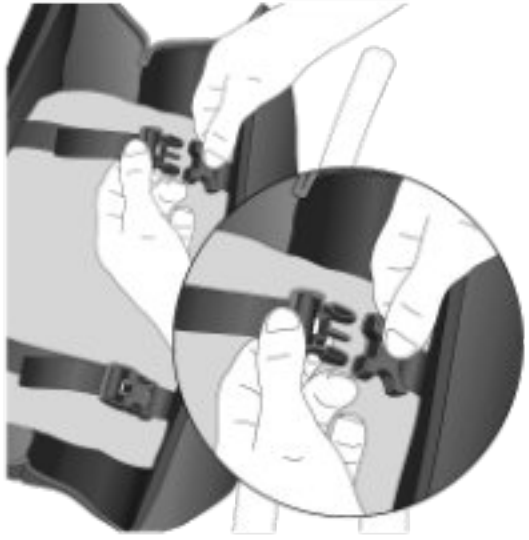


! MAX. LOAD

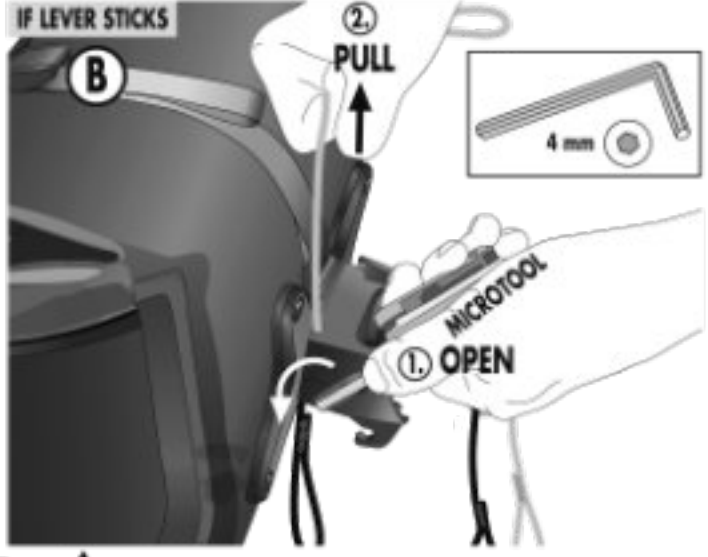
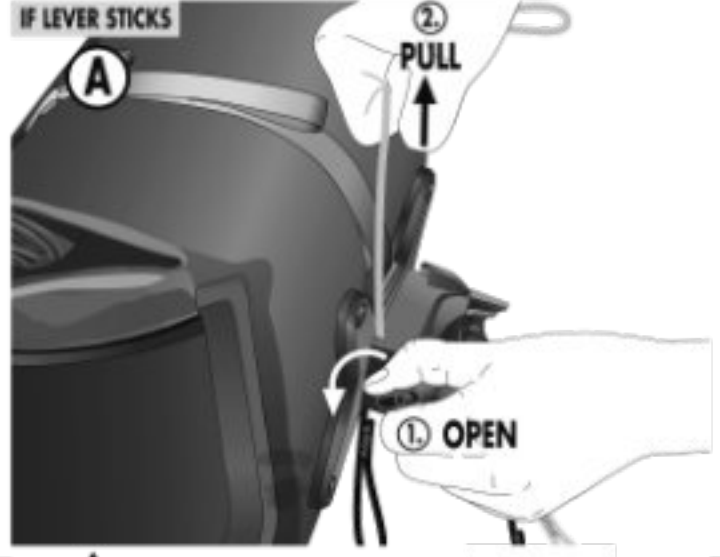
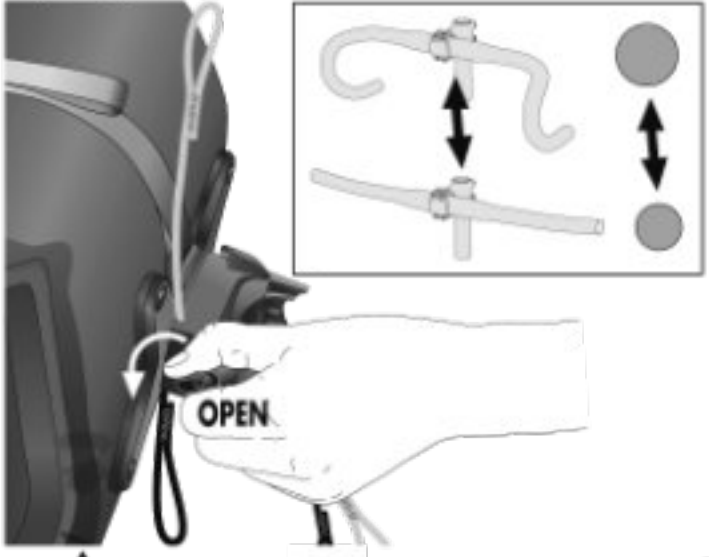
! CHECK FIXATION BEFORE EVERY RIDE

! MAX. LOAD

! CHECK FIXATION BEFORE EVERY RIDE



! HANDLEBAR EXCHANGE



! READJUST BLACK CORD

! OPTION ACCESSORIES

