

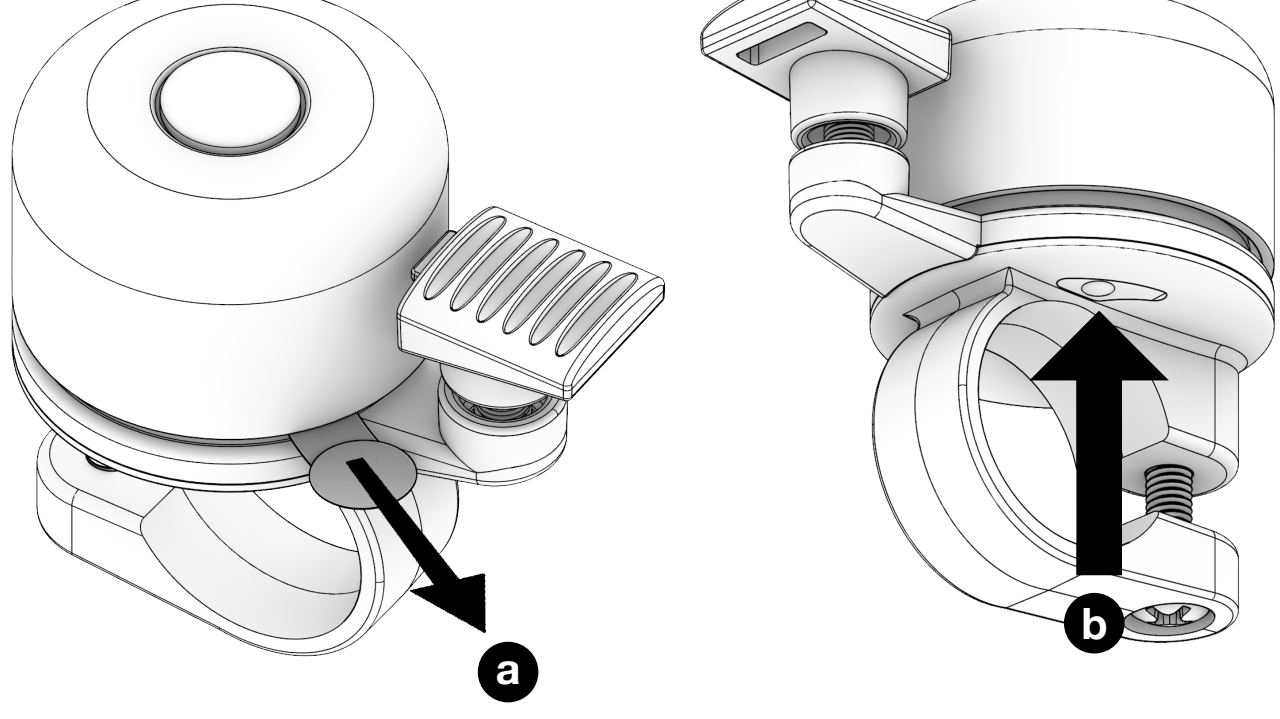
AirBell® Pro

Instruction Manual



1. AirBell Setup

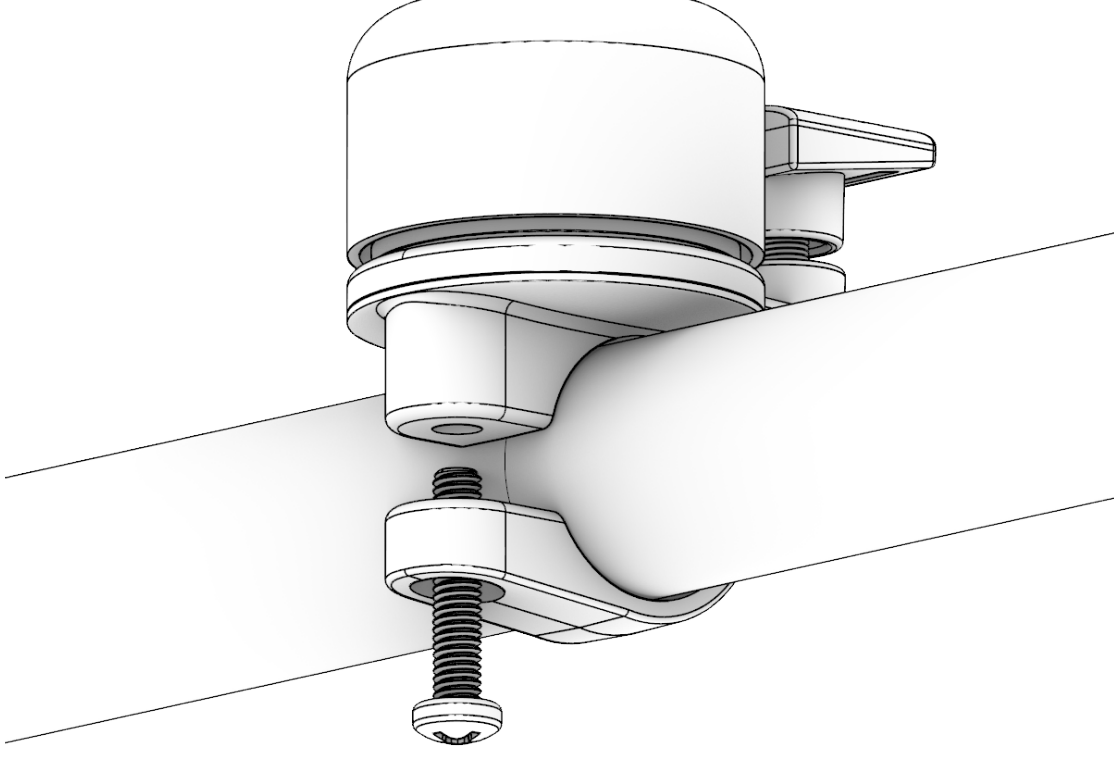
- a** Remove the plastic strip by pulling it in the direction indicated by the arrow.



- b** Locate the button on the bottom of the AirBell. Press the button for at least 5 seconds. When the AirBell emits a sound (ascending melody) it is turned on.

d Mounting the AirBell on your Bike

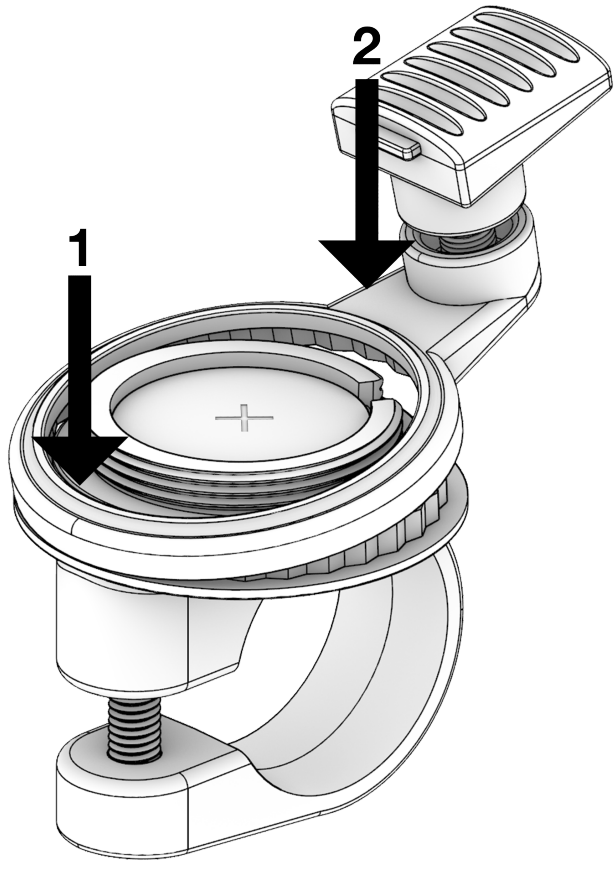
To mount the AirBell on your handlebar, you need a Phillips head screwdriver. Simply loosen the screw and slide the AirBell onto your handlebar.



Position the AirBell and tighten the screw.

The ring on which the trigger is attached, features a small protrusion to hold it in place.

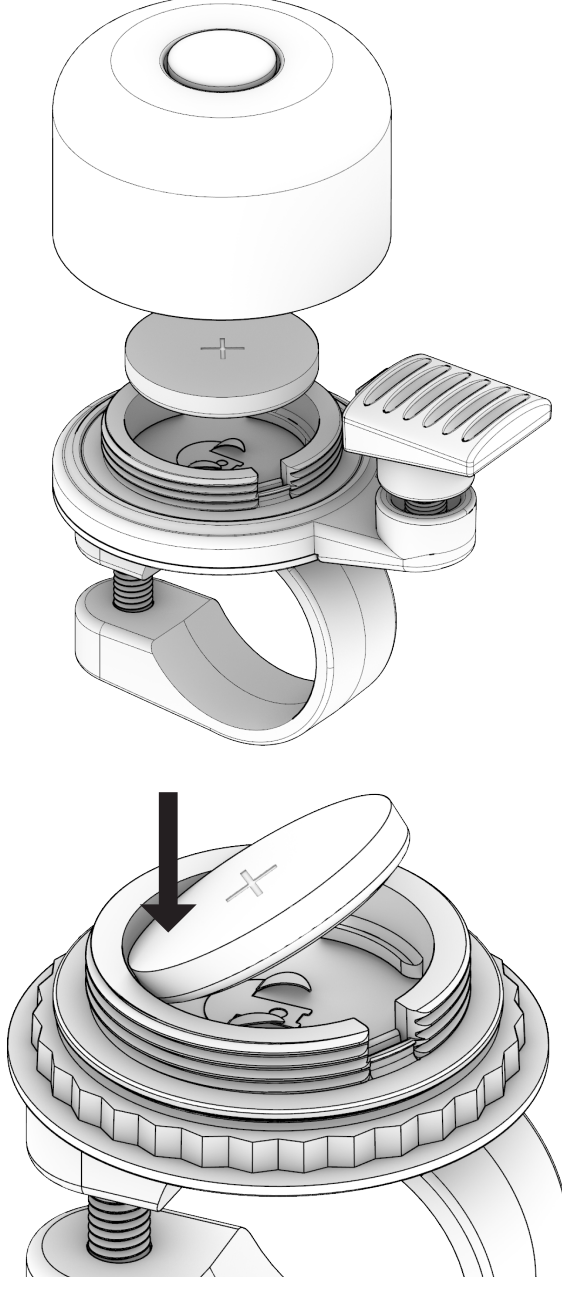
For a secure attachment, press the ring onto the AirBell with the protrusion's side first (1), then push the ring down (2). Reassemble the AirBell in the same manner it was disassembled.



To ensure a proper fit, engage the dome's mechanism and press it down firmly for the final half turn to fasten it securely.

To open the AirBell, press down on the dome and slowly turn it counterclockwise until it catches. Once you feel the dome catch, continue to press down while turning counterclockwise until the top is completely unscrewed from the bottom.

To effortlessly remove and replace the battery, simply press on the battery just above the screw. Ensure the "+" symbol is oriented upwards before insertion. Afterwards, reassemble the AirBell in the same manner as you disassembled it. Be sure to tighten the top part firmly by pressing down on the dome for the last half turn.



5. Factory Reset

To reset the AirBell to its factory settings, please follow these steps:

- First delete the AirBell from your iCloud Account via the Find My App.
- To perform a physical reset of the AirBell, double-click the button while the AirBell is powered on. Upon hearing a sound, immediately press the button again and continue pressing it.
- After about 3 seconds, you will hear a series of three beeps. Continue pressing the button.
- After an additional 5 seconds, you will hear a different melody.
- Release the button and the AirBell will be successfully reset.

7. Technical Specifications

| | |
|--|---|
| Battery | user replaceable CR2032 coin cell battery |
| Dimensions (l/w/h) suitable for | 49/35/52mm; 22mm handlebar |
| Connectivity | |
| Proximity Finding | Bluetooth |
| Antenna Frequency | 2400 to 2483.5 MHz |
| Antenna Power | < 2.5 mW |
| Speaker | built in Piezo (> 60 dB) |
| Sensor | Accelerometer |
| Temperature Range | -10°C to +60°C (14°F to 140°F) |
| Range | up to 25m (82ft) |
| Water resistance | IPX5 |

11. Legal

Use of the Works with Apple badge means that a product has been designed to work specifically with the technology identified in the badge and has been certified by the product manufacturer to meet Apple Find My network product specifications and requirements. Apple is not responsible for the operation of this device or use of this product or its compliance with safety and regulatory standards.

Apple, Apple Watch, iPad, iPadOS, iPod touch, Mac, and macOS are trademarks of Apple Inc., registered in the U.S. and other countries. iOS is a trademark or registered trademark of Cisco in the U.S. and other countries and is used under license.

AirBell is a registered trademark of TeamNobile GmbH.

13. Disposal & Environment

This product complies with the following directives:

- WEEE-Directive 2012/19/EU
- Battery-Directive 2006/66/EC

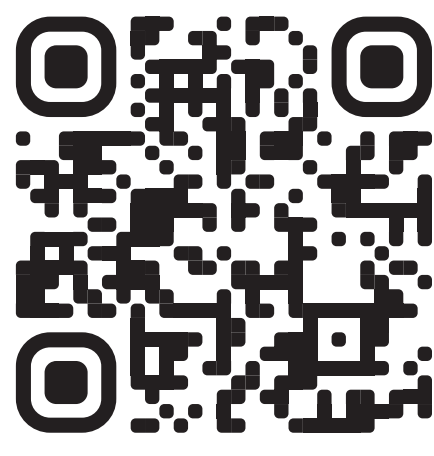
The crossed-out trash can symbol indicates that electronic devices and batteries must not be disposed of with household waste at the end of their life cycle.

Consumers are legally required to dispose of electronic devices and batteries properly at the end of their life. Returns can be made free of charge at public collection points or at retail locations. Batteries that are not securely fixed and easily removable must be disposed of separately. Disposal regulations follow the respective national laws. Electronic devices and batteries contain valuable resources as well as potentially harmful substances for health and the environment. By reusing or separately collecting and recycling them, you actively contribute to protecting health and the environment.

Users are responsible for deleting their personal data before disposal.

15. Contact

For any inquiries or concerns regarding the AirBell, please refer to our website for detailed information at www.airbell.de/pages/airbell-pro-faq or reach out to us directly via www.airbell.de/pages/contact



FAQ



Safety instructions

- Please read the user manual completely before operating the product.
- Handle the AirBell with care, as it contains sensitive electronic components and a battery. Damage caused by drops, extreme heat, liquids, or chemicals can impair its functionality or cause injuries. Do not use a damaged AirBell.
- This product contains a lithium battery and is not a toy. Keep out of reach of children.
- Do not make any modifications to the product. Doing so will void any warranty claims.

The manufacturer is not liable for damages resulting from improper use of this product.

c Connect to Find My

To verify the AirBell is powered on, double-click the button for a status query. If the AirBell emits three ascending beeps, it indicates that it is turned on.

- Open the Find My App on your Apple device.
- In the bottom right corner, tap on the blue "+" symbol.
- From the menu, select "Add Other Item."

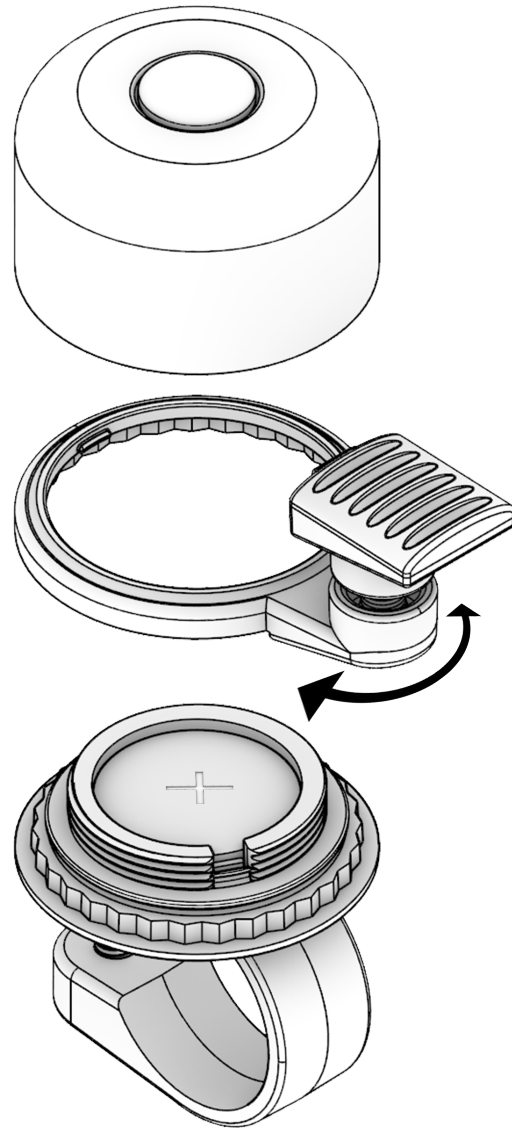
- Once the AirBell appears on the screen, tap on "Connect."

- You can now customize the name of your AirBell and tap "Continue." Follow the on-screen instructions to proceed.

If you double-click now to check the status, you should hear a ticking sound. This indicates that the AirBell is connected to the Find My network and is operational.

e Trigger Positioning

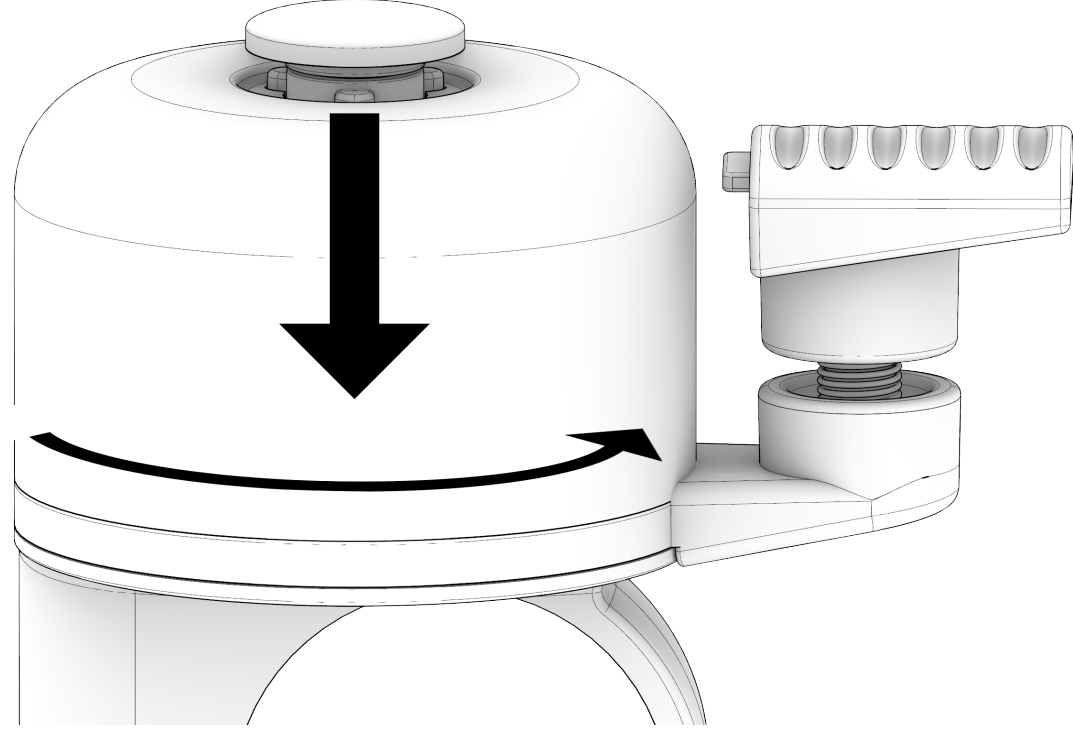
For optimal comfort, you can adjust the AirBell's trigger position. Please refer to the instructions outlined in the second chapter on page 29 to detach the top of the AirBell. Once the top is removed, you can adjust the position of the ring where the trigger is mounted according to your preference. It is advisable to determine the ideal position for the AirBell on your bike's handlebar before adjusting the trigger accordingly. The trigger can be rotated 360°.



2. Replacing the Battery

The AirBell contains a CR2032 coin cell battery which is located in a compartment beneath the dome.

The opening mechanism is similar to that of a security bottle cap.



3. AirBell Features

The AirBell leverages Apple's Find My Netzwerk, offering the following features:

- Map and Location via the Find My App
- Sound playback
- Location sharing for your AirBell
- "Lost" mode
- Serial Number Lookup

4. Serial Number Lookup

The serial number of the AirBell is located on the Bottom of the AirBell.

Alternatively, you can also access the serial number in the Find My App. To activate the "Serial Number Lookup Mode" on the AirBell, press the button on the bottom of the device three times in quick succession. Once activated, you can view the serial number in the Find My App.

6. Button Functions

| # | Function | Button Action | Sound |
|---|---------------------------|--|--|
| 1 | Power On | Press and hold for 5 seconds | Ascending Melody |
| 2 | Power Off | Press 5 times in quick succession | Descending Melody |
| 3 | Request Status | Double-click | 3 short beeps if on; 1 beep sound if on and connected |
| 4 | Serial Number Lookup Mode | Press for 3 seconds (AirBell has to be powered on) | 3 short beeps |
| 5 | Reset | See Chapter 5 | |

8. Compatibility

The AirBell Pro works exclusively with Apple devices. To use the Apple Find My app to locate this item, the latest version of iOS, iPadOS, or macOS is recommended. The Find Items app on Apple Watch requires the latest version of watchOS.

9. Privacy

The Apple Find My network uses advanced encryption to ensure that no one else, not even Apple or AirBell can view the location of your AirBell.

10. Warranty

The AirBell is covered by a one-year limited warranty.

12. Warnings

This product contains a CR2032 lithium battery, and the following safety precautions should be observed:

- Use only CR2032 button cells.
- Be sure to observe the correct polarity of the batteries (marked + and -) and insert them accordingly. Incorrect insertion can lead to leakage or even explosion of the batteries.
- Warning: The AirBell uses Bluetooth. Keep away from other electronic devices operating on the same frequency. Follow the manufacturer's instructions for proper pairing.
- The AirBell contains a CR2032 button cell battery. Keep out of reach of children. Do not disassemble, pierce, or expose to fire. Risk of explosion if handled improperly. Dispose of used batteries properly.

Warning: Contains button cell battery. Swallowing can cause serious injury or death. If swallowed, seek medical attention immediately. Not a toy, not edible.

Warning: Contains button cell battery. Improper handling poses a risk of fire and explosion. Avoid heat and mechanical stress.

Warning: Keep new and used button cells out of reach of children. Risk of choking if swallowed.

- If the battery compartment does not close securely, discontinue use and keep the product away from children.

14. Declaration of Conformity (DoC)

This product complies with the General Product Safety Regulation (GPSR) (EU) 2023/988.

EU-Declaration of Conformity

Hereby, TeamNobile GmbH declares that the AirBell Pro (AB_IC_A_01_22mm) complies with the following directives:

- RED 2014/53/EU
- RoHS-Directive 2011/65/EU



The full text of the declaration of conformity is available at: www.airbell.de/pages/regulatory

US-Declaration of Conformity

This device complies with part 15 of the FCC Rules. Operation is subject to the following two conditions: (1) This device may not cause harmful interference, and (2) this device must accept any interference received, including interference that may cause undesired operation.



Safe and sound.

3V Lithium Battery



www.airbell.de
TeamNobile GmbH
Henriettensplatz 8/4
1150 Vienna
Austria

Designed in Austria
Made in China